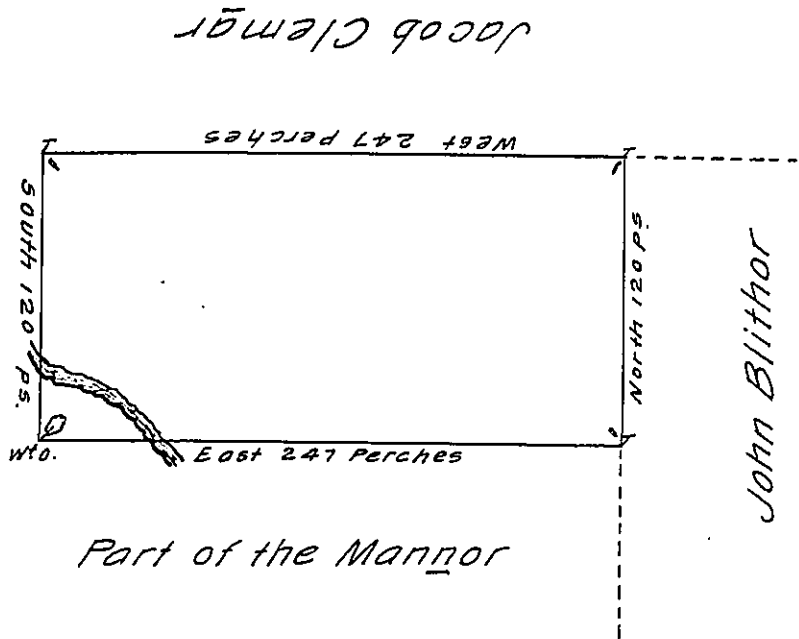


Part of the Mannor



Part of the Mannor

Pursuant to a Verbal Order from the Hon^{ble} the Proprietor, Surveyed to Henry Teeter on the Sixth day of December 1738. the above Described Tract of Land ~~being~~ being part of Richland Mannor in the County of Bucks, Containing 174³/₄ Acres with Allowance of 6 ¢ Cent.

Nich^o Scull. —

IN TESTIMONY that the above is a copy of the original remaining on file in the Department of Internal Affairs of Pennsylvania, made conformably to an Act of Assembly approved the 16th day of February, 1833, I have hereunto set my Hand and caused the Seal of said Department to be affixed at Harrisburg, this twenty seventh day of May 1910.

Henry Howard
Secretary of Internal Affairs.